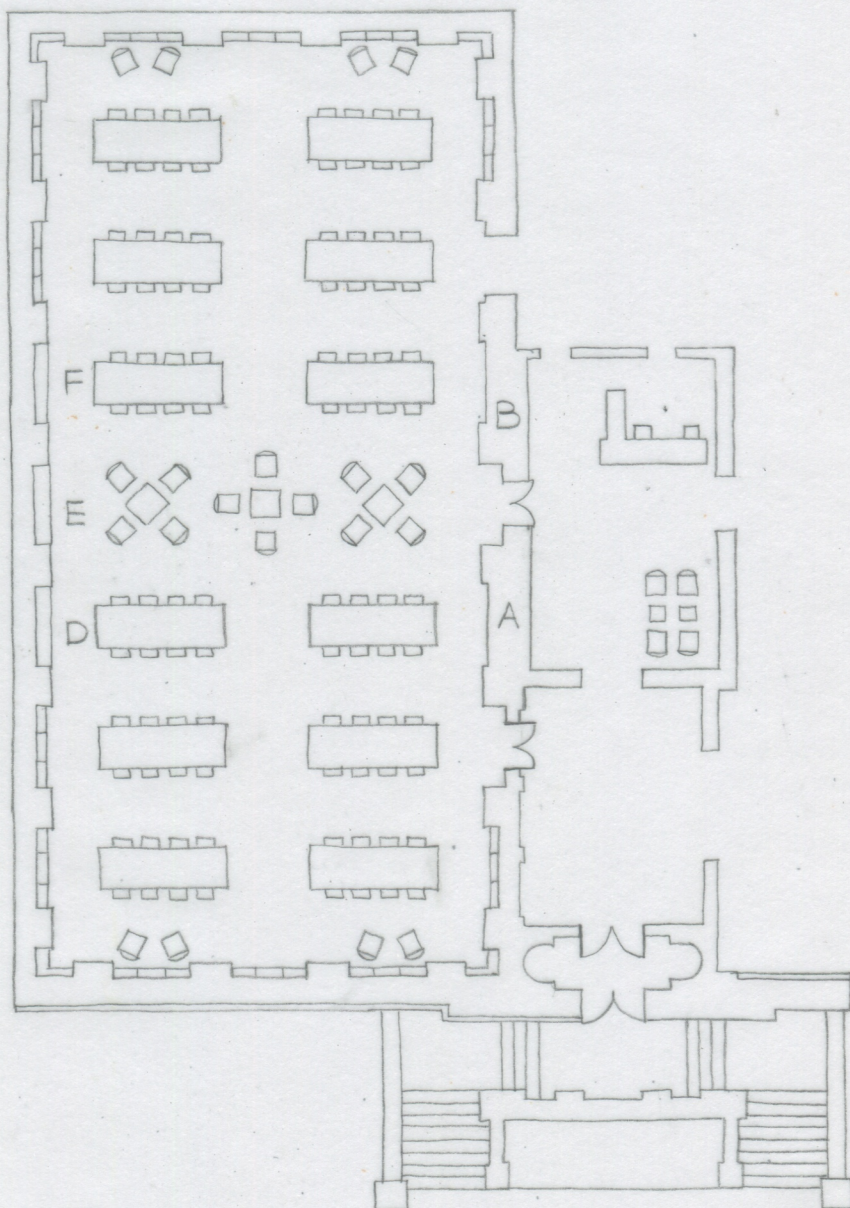


Intercalary Event
John Hay Library

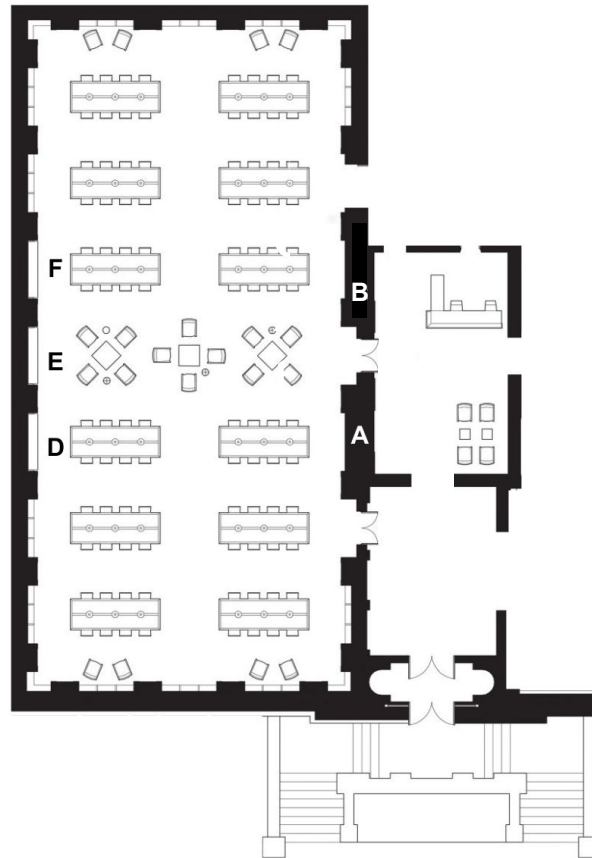
20 Prospect St, Providence, RI



Intercalary Event

January 21 - December 18, 2020

JOHN HAY LIBRARY



Lobby Cases

- A)** Jocelyne Prince
Intercalary Study Lamp is a hybrid lamp and orrey. Watching the sun move throughout the day in the Willis Reading Room is a continual reminder of our rotation around the sun. Galileo stood trial for heresy because his observations and his writings promoted heliocentrism. Observation and study are critical to our understanding of the world. The Reading Room study lamps and Galileo's moon drawings from *Sidereus Nuncius (Starry Messenger)* were key sources of inspiration for this work.
- B)** Sean Salstrom
Feline Bezoar Discovery Reports is inspired by the whalers search for whales and, by proxy, ambergris (whale vomit). In this work Salstrom brought the act of ambergris discovery closer to home. For the past year he searched out and collected hairballs expelled by his two cats (Alcatraz and Natto). He mapped his home noting each hairball discovery site, and then made unique containers to display each hairball.

Willis Reading Room Cases

- C) Sean Salstrom
Molten Ambergris (materials: blown glass, carbonized meat, carbonized fat, carbonized newspaper, carbonized fast food). Thinking of ambergris as something that can be consumed but difficult to digest, Salstrom took consumables in his life that might also be difficult to digest: the news (newspaper), fast food, carbonized meat and fat, chicken bones, and embedded them into molten glass to make blubbery mounds. Some of the works are displayed elevated, as if they are floating, cloud-like. This is in reference to the valuable ambergris often nicknamed 'Floating Gold'.
- D) Katie Bullock
But Now to Return to Our Sun is an installation composed of traced text fragments sourced from an assortment of written and printed works, spanning numerous fields of study and moments in history. Selected texts range from questions of navigation and map making to imagination and wonder. Several drawings are pulled from Arabella Buckley's 19th century work *Through Magic Glasses*, which chronicles Buckley's fascination with the world around her, and is housed in the Hay Library's History of Science Collection. The drawings are arranged behind an image of a sunspot in motion, taken from *Through Magic Glasses*, and can be read in any direction from any starting point. The work ultimately comes together to form a loose narrative exploring perception and observation and their role in our perpetual attempt to understand the complexity and nuance of the world around us.
- E) Jocelyne Prince
Newton's Observations uses Newton's rings to suggest phenomena that occurs on the less visible scale, and they also look a graphic representation of some type of orbit. The large poster image mimics the structure of the month of February 2020. In this calendar every day has a high speed camera image of glass in movement - each of these are linked to Instagram videos of the action. These actions mimic celestial goings-on in this leap year month. White's *1812 Almanac* was used as a guide for the calendar. Please go to: <https://www.instagram.com/jocelyneprince/> to view videos.

SATELLITE EXHIBITIONS:

Chazan Gallery

228 Angell St, Providence, RI

Gallery hours:

Tues-Sat 11am-4pm

Sun 2-4pm

Exhibition dates:

Feb 13- March 11, 2020

Ladd Observatory

210 Doyle Avenue, Providence, RI

Ladd hours:

Tuesday evenings 8-10 pm**

**when skies are clear

or by appointment; 401-863-2769

Exhibition dates:

Feb 13 - August 19, 2020