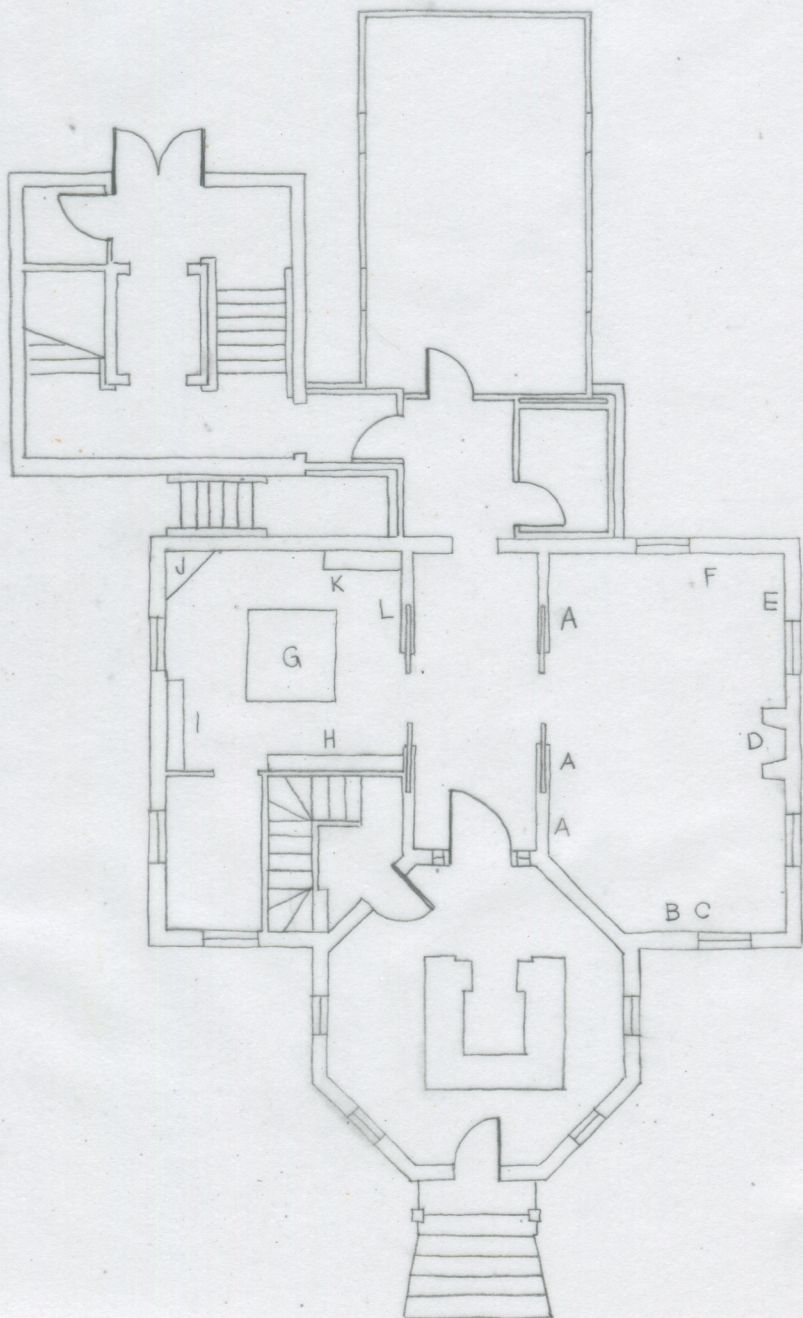


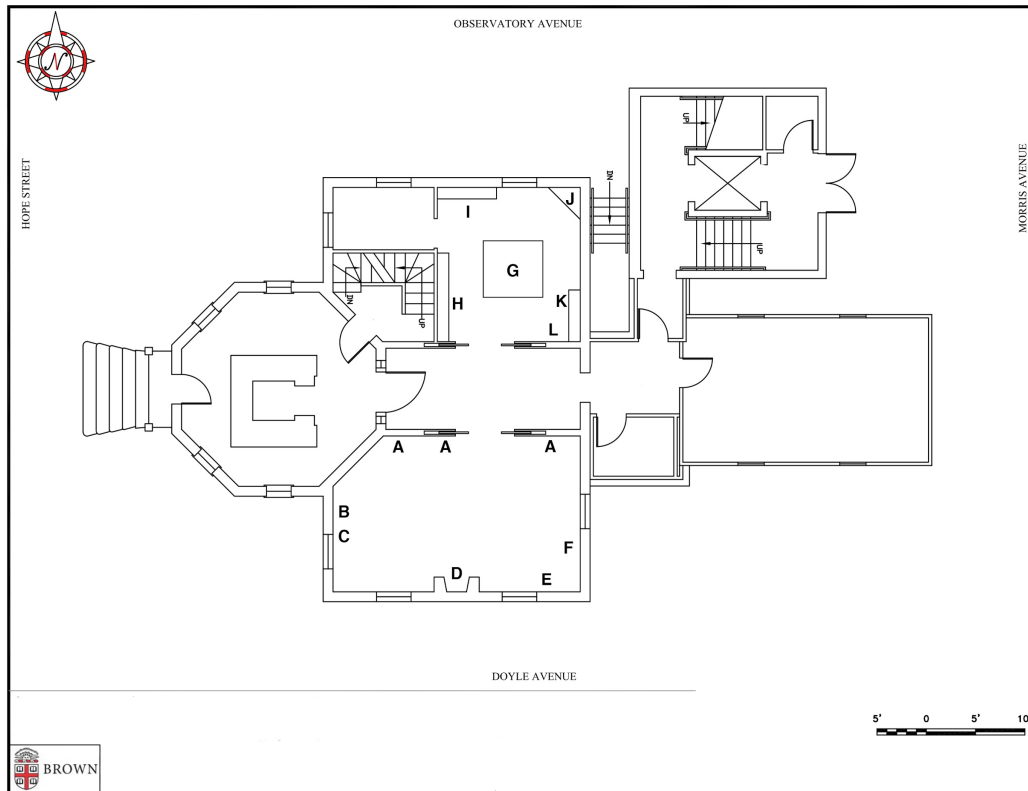
Intercalary Event
Ladd Observatory

210 Doyle Ave, Providence, RI



Intercalary Event

February 13 - August 19, 2020
LADD OBSERVATORY



- A)** Jocelyne Prince
Slide Library, Dust Series
This series transforms the glass dust of the studio into cosmic patterns. Here the dust detritus is left to settle on glass plates; the patterns are left intact and are fired into the glass. The patterns are unmistakably celestial.
- B)** Katie Bullock
Glass Moon Studies
Series studies investigating pieces of glass on an overhead projector and the shows that they cast.
- C)** Sean Salstrom
Trophies: Differentiation, Zenolithic, and Igneous
Glass objects were made with embedded materials collected from the surrounding area of the Ladd Observatory. The title refers to terms from a Meteorite Glossary. The trophy-like shapes also loosely allude to astronomical and planetary models in the observatory.
- D)** Katie Bullock
Glass Moon Studies
Series studies investigating pieces of glass on an overhead projector and the shows that they cast.

- E)** Katie Bullock
Tools for Looking
 The first tool is a small mirror that reflects and magnifies the viewer's eye as they hold the tool up to their face.
 The second tool holds a phone with a clip on telescope, the telescope is then pointed at a celestial body, while the tool is then rested on the viewer's chest. The heartbeat of the viewer is made visible as the viewer observe the celestial body on the screen.
- F)** Katie Bullock
Foam Moon Study
 Study investigating foam in the bottom of a coffee cup.
- G)** Sean Salstrom
Planetary Models and Evidence of First Visit to the Ladd
 See captions in vitrine.
- H, I & K)** Katie Bullock
Galactic Marble Guts
 Images of the insides of glass marbles interspersed with galactic imagery.
- J)** Jocelyne Prince
31 Celestial Events
 31 videos, all 31 seconds long, mimic the daily celestial events going on during the month of August 2017. The short videos serve as an abstract record of time, highlighting events that normally happen in a split second.
- L)** Jocelyne Prince
Star Cylinder is a glass cylinder star map based on the cylindrical projection of Su Song's star maps. Su Song (1020-1101) was a Chinese scientist and mechanical engineer of the Song Dynasty. The maps were first published in the year of 1092, in Su's book *Xin Yi Xiang Fa Yao*.

SATELLITE EXHIBITIONS:

Chazan Gallery

228 Angell Street
 Providence, RI

Gallery hours:
 Tues-Sat 11am-4pm
 Sun 2-4pm

Exhibition dates:
 Feb 13 - March 4, 2020

John Hay Library

Willis Reading Room Vitrines
 20 Prospect St, Providence, RI

Library hours:
 Mon-Fri 10am-5pm

Exhibition dates:
 Jan 21 - Dec 18, 2020